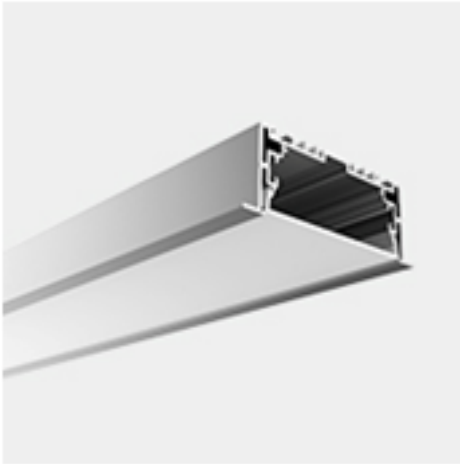


Specification

PRC 9435

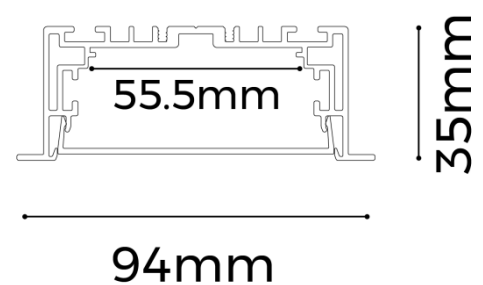


PRC 9435

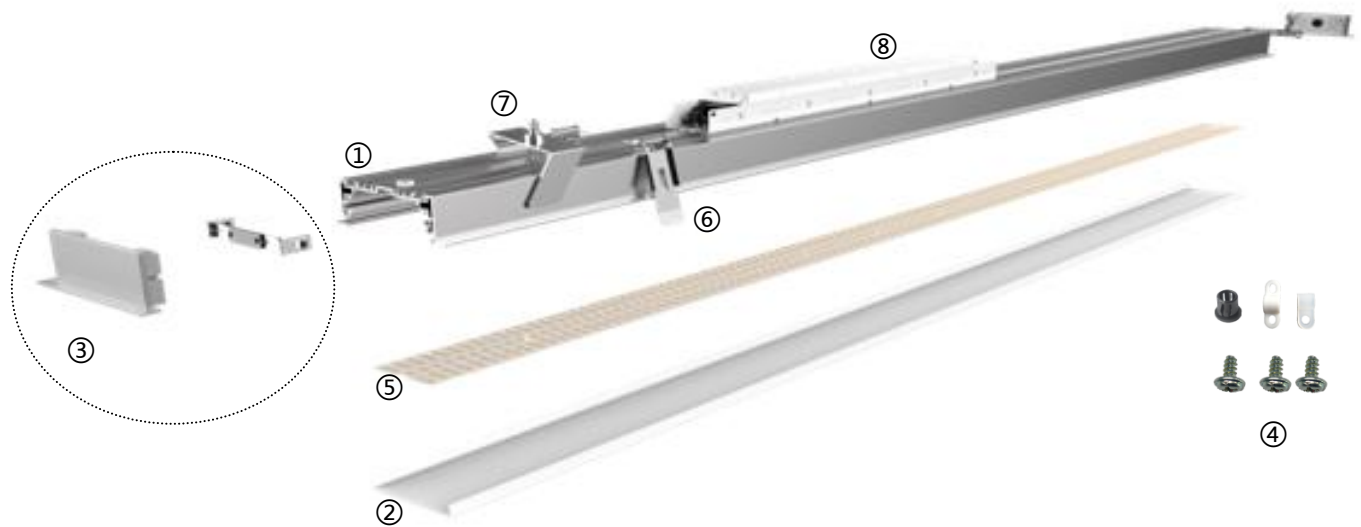


Features

- Creative magnetic end cap, connect in seconds
- AL6063-T5 aluminum profile with high-quality surface treatment and three optional colors of black, white and silve
- Specially designed light source with PC diffusers producing homogenous & soft lighting
- Super free connection: 180 ° extender, "L-", "T-" and "X-" type light corner
- Recessed installation with two optional accessories of N-shaped buckle and butterfly clip
- Winner of IF Design Awards 2016



Details



Standard Configuration



① Profile:

Installation : Recessed
 Material: AL6063-T5
 Applications: Indoors
 Profile weight: 1.3kg/2.5m
 Size: L2500*W94*H35mm
 Surface processing: Anodizing



② Diffuser:

Type: Frosted diffuser
 Material: PC
 Light transmittance : 86%
 Size : L2500*W72.3*H10mm
 PC Feature : The diffuser will extend (shrink) 0.8mm/m when the temperature rises (drops) 10°C.



③ End cap






L94*W35*H18mm

Fireproof PC& magnet



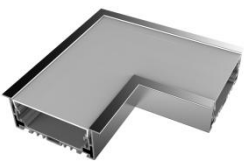
④ Cable clip

Optional Accessories

	⑥ Recessed buckle (Butterfly clips)	L68.5*W35*H31.6mm	SPCC
	⑦ Recessed buckle (N-shaped)	L96*W84*H39.5mm	SPCC
	⑧ Power supply	ESD-V24-100S	390*38*28.5mm
	⑤ Flexible strip D8420-24V-52mm	DC24V 30W/m	width 52mm Min. cutting unit 50mm
	⑤ Rigid modular DY8420-24V-55mm	DC24V 30W/m	width 55mm Min. cutting unit 50mm

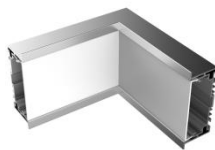
Corners

L-type corner (L90- LE9435)



Al6063-T5&PC
6W
L157*W157*H35mm

L-type inner corner(L90N- LE9435)



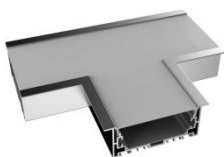
Al6063-T5&PC
6W
L150*W150*H94mm

L-type exterior corner(L90W- LE9435)



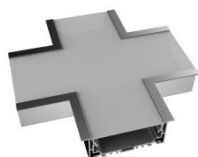
Al6063-T5&PC
8.6W
L150*W150*H94mm

T-type corner(T90- LE9435)



Al6063-T5&PC
7.6W
L200*W157*H35mm

X-type corner(X90- LE9435)



Al6063-T5&PC
10.1W
L200*W200*H35mm

180° extender

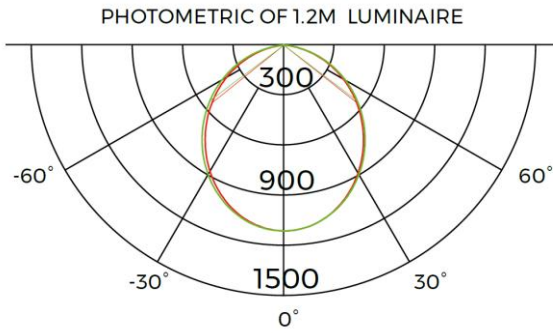


SPCC
silver
L55*W10*H2mm

* The corners can be provided with or without light source.

Optical Parameter

D8420-24V-52mm light source, frosted diffuser



1m	382.6,1110lx	251.80cm
2m	95.64,277.5lx	503.60cm
3m	42.51,123.3lx	755.40cm
5m	15.30,44.40lx	1259.00cm
7m	7.808,22.65lx	1762.59cm
Height	Eavg,Emax	Angle:103.08deg Diameter

The diagram shows a yellow cone representing the light beam spread. The cone is divided into horizontal sections corresponding to the heights listed in the table. The diameter of the cone increases as the height increases.