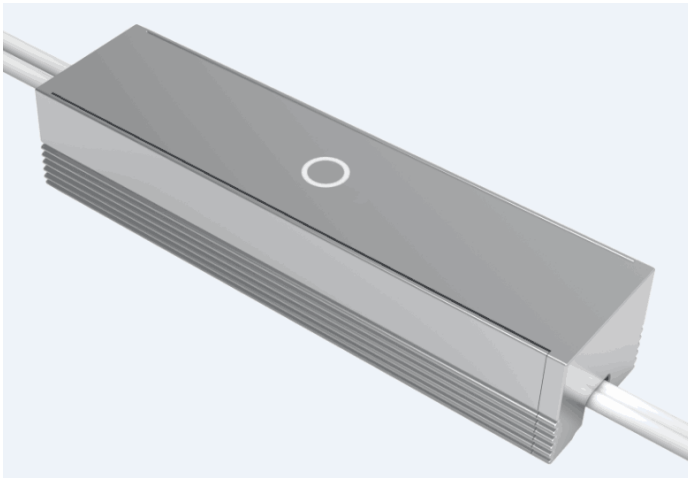


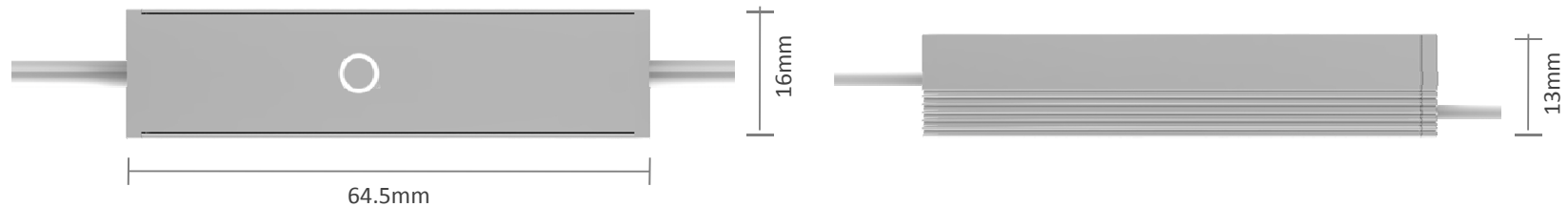
## AC006



### Features

- Touch to turn on/off & dim
- Stepless dimming
- Compatible with 12V/24V LED strip
- Input reverse-connection-proof protection/Output short-circuit-proof protection
- Quick & intelligent control
- Superb anti-interference
- Brightness memory

### Technical Parameters



Input		Output		Environment	
Input voltage	12V~24VDC	Output voltage	12V~24VDC	Ambient temperature	-20°C~+40°C
		Max. load current	2.5A	Humidity	20%~85%
		Max. load power	30W/60W(12V/24V)	Storage temperature	-25°C~+80°C
		Dimming range	5%--100%	Applications	Indoors
		Standby power	0.09W	IP grade	IP20
		Control way	touch		