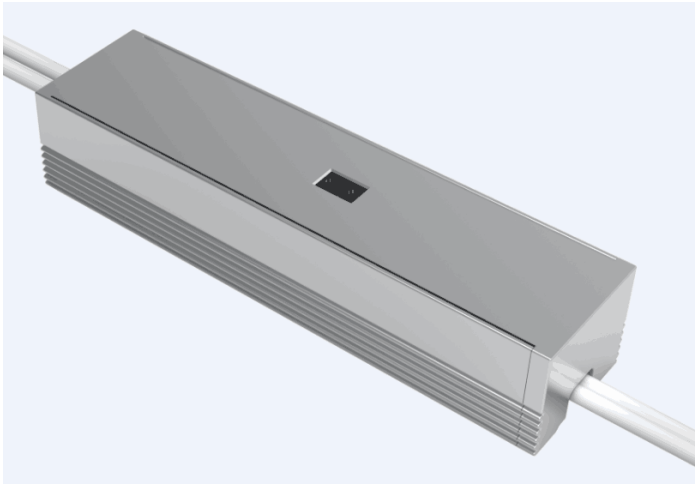


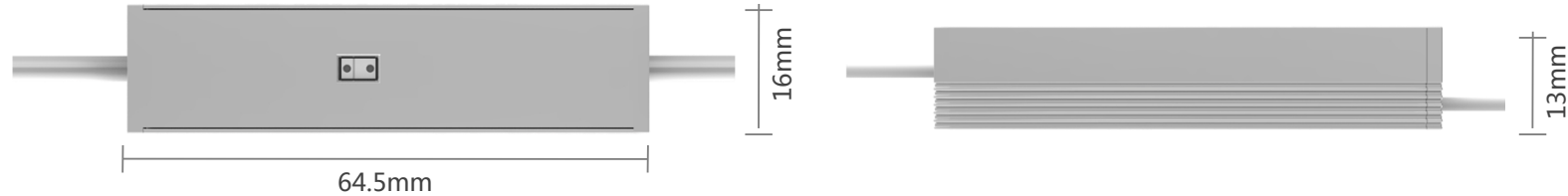
AC004



Features

- Swipe across the sensor to turn on/off & dim
- Stepless dimming
- Compatible with 12V/24V LED strip
- Input reverse-connection-proof protection/Output short-circuit-proof protection
- Quick & intelligent control
- Superb anti-interference
- Brightness memory

Technical Parameters



Input

Input voltage 12V~24VDC

Output

Output voltage 12V~24VDC
 Max. load current 2.5A
 Max. load power 30W/60W(12V/24V)
 Dimming range 5%--100%
 Standby power 0.09W
 Sensor range 5~8cm
 Sensor angle <math><10^\circ</math>

Environment

Ambient temperature $-20^\circ\text{C} \sim +40^\circ\text{C}$
 Humidity 20%~85%
 Storage temperature $-25^\circ\text{C} \sim +80^\circ\text{C}$
 Applications Indoors
 IP grade IP20